

# MXT 840

Constructions **Telehandlers**



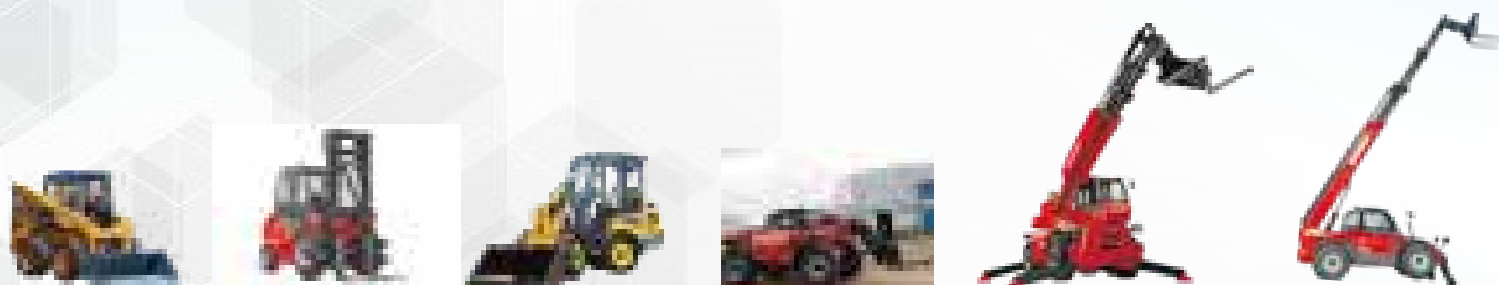
## Handling Your **World**

The Manitou group is a global market leader in rough-terrain material handling. It designs, manufactures, distributes and services equipment for the construction, agriculture and industry sectors.

The Group's product ranges include rough-terrain fixed, rotating and heavy-duty telehandlers, rough-terrain, semi-industrial and industrial forklift trucks, wheeled or tracked skid steers, articulated loaders, backhoe loaders, aerial work platforms, truck-mounted forklifts, warehousing equipment and attachments.

Through its iconic brands – Manitou, Gehl and Mustang by Manitou – and its worldwide network of 1,500 dealers, the Group offers the best solutions to create optimum value for its customers.

With its registered office in France, in 2018 the group recorded revenue of 1.9 billion euros in 140 countries, and employs 4,400 people, all committed to delivering customer satisfaction.



1958

Marcel Braud conceives the idea of the Manitou truck.

1972

The Group enters foreign markets. Sales partnership agreement signed with Toyota for exclusive distribution of Toyota industrial forklift trucks in France.

1981

Launch of first Manitou telehandler.

1984

Manitou floated onstock exchange.

1993

First MRT rotating telehandlers are sold.

1995

Launch of first range of aerial work platforms.

1996

ISO 9001 certification obtained.

1998

Marcel Braud becomes Chairman of the Supervisory Board.

2007

Manitou opens an international logistics centre spanning 22,000 m<sup>2</sup>.


 GROUP LISTED ON THE  
 PARIS STOCK EXCHANGE

**3 brands**

 distributed by  
 1,500 dealers  
 in 140 countries





- 28 companies
- 11 production facilities
- 4,400 employees
- 80% of revenue comes from foreign markets
- Revenue of 1.9 billion euros in 2018

2008

 Takeover of  
 the American  
 company Gehl.

2009

 Change of  
 management  
 and a return  
 to a Board of  
 Directors.

2010

 Launch of Gehl  
 and Mustang  
 articulated  
 loaders.

2012

 Crossover  
 agreement signed  
 with Yanmar for  
 the manufacture  
 and distribution of  
 mini-excavators.

2013

 Consolidation of  
 Yanmar partnership  
 as Yanmar  
 becomes a Group  
 shareholder,  
 with 6.26% of  
 the capital.

2014

 January: Michel  
 Denis appointed  
 President and CEO.  
 April: A new roadmap  
 is drawn up focusing  
 on the three divisions,  
 including one for  
 services.

2015

 Manitou  
 celebrates the  
 sale of its  
 500,000th  
 machine  
 worldwide.



2016

 Launch of the  
 new MLT range,  
 NewAg rotating  
 telehandlers for  
 agriculture.



2017

 Inauguration of the  
 new entity, Manitou  
 Equipment India,  
 specialising in  
 compact loaders  
 and backhoe  
 loaders.

## What is a Manitou telehandlers?

Manitou telehandlers are handling equipment perfectly adapted to work in the most difficult conditions and terrains. Equipped with a telescopic boom, they will save you time on a daily basis when handling all types of loads in height and outreach.

Versatile and true tool carriers, they allow a wide variety of attachments to be used in a simple, fast and safe way for the operator and his working environment.

The Manitou brand also offers a wide range of services and attachments to support you throughout the life cycle of your machine.

### Move Loads in All Conditions

The telescopic arm passes above obstacles and enables you to move your load safely. It also allows you to move suspended loads using an assortment of jibs, cranes and winches.

### Place the load where you want to.

The MTX 840 can place loads up to 4 tons at a height of up to 7,6 meters with an outreach of up to 4.20 meters.

### Scoop & dump

Our bucket and concrete skip attachments allow you to scoop up and dump various types of content easily.

### Loading & Unloading Trucks and Containers

The MTX 840 can place loads up to 4 tons at a height of up to 7,6 meters with an outreach of up to 4.20 meters.

### Preparing and Cleaning the Ground

The drawbar pull and breakout force of the MXT 840 means it can be used to level the ground and clear excess soil and waste.

### Versatility

When matched with one of our many available attachments, the MXT 840 will satisfy your construction and job sites handling needs.







Working  
outreach  
up to  
**4,23 m**

**7,6 m**  
Lift height

**4x4x4**

4 tonnes  
4 wheel drive  
4 steering wheels



*"With the help of my Manitou, I only need one machine to make a multitude of applications on a daily basis. It's a real toolbox! »*

## INCREASED VERSATILITY

The MXT 840 is a genuine tool holder. It comes with a large selection of attachments that offer users precisely the kind of versatility needed on a work site. The Manitou fork carriage enables you to change your attachment in just a few seconds.

## Attachments designed and approved by Manitou

As a manufacturer of machines and attachments, Manitou is ideally suited to deliver unmatched performance and productivity when our products are used together.



**TFF**  
Floating fork carriage



**CBR**  
Re-handling bucket



**CBC**  
Construction bucket



**CB 4x1**  
4-in-1 bucket



**PC 50**  
Frame mounted hook



**P 4000**  
Crane jib



**P 600**  
Extension jib



**HBB**  
Big Bag handler



**BB 500**  
Concrete skip



**GL 400 / GL 600**  
Distributor bucket



**NE 100**  
Platform basket





## A Simple and Proven Coupling System

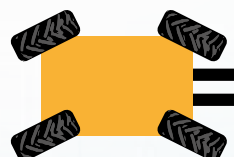


## An ultra-manageable machine with three steering modes

- 2 front steering wheels for greater safety on the road.
- 4 steering wheels for manoeuvring easily in all circumstances.
- Crab mode for sideways approaches and tricky unloading maneuvers.



4 wheel drive  
2 steering wheels



4 wheel drive  
4 steering wheels



4 wheel drive in  
crab mode



## DESIGNED FOR PERFORMANCE



## A Maneuverable All-Terrain Machine

The MXT 840 has been designed to work well in all types of conditions and terrain.

A turning circle of just 3.9 meters combined with 4 steering wheels saves you time. No need for three-point turns to get around the construction site.

Four-wheel drive and excellent drawbar pull allow you to negotiate all types of surfaces and slopes with an gradient up to 47%.

A substantial ground clearance of 38 cm allows you to work in all weather conditions (rain, snow, etc.) offering improved gradeability.

An oscillating rear axle ensures excellent stability and traction for the operator.

A longitudinal stability indicator gives the operator information about outreach and lifting height capabilities, which helps the operator use the machine safely.



## An Adaptive Transmission Releases the Full Power

This type of transmission increases the drawbar pull of the machine, which provides optimum handling for work that requires a lot of torque. Combined with a four-speed gearbox (front/rear), it optimizes moving speed and tractive effort depending on the work to be done.





## EFFICIENCY AND PRODUCTIVITY GUARANTEED

### Simplicity, driver of productivity

2 front steering wheels for excellent steering for greater safety on the road  
Very quick and easy to use



Lifting/lowering of the boom, telescopic boom extension and retraction, scooping/tipping, attachment hydraulic line  
Dashboard & levers easy to use  
Start-up in less than 30 seconds

### Safe cabin

The MXT 840 cab meets the level 2 FOPS/ROPS standards. It is capable of supporting the machine rollover and protecting the operator from falling objects.



### Easy access cabin

- Grab handle to access the cab
- Non-slip steps
- Helps to reduce operator fatigue and avoid falls



### Optimal lighting

A machine fitted out for working in the dark:  
Full lighting  
1 rotating beacon light (optional)  
4 working lights on cab (optional)  
Rear license plate light (optional)





## STRENGTH & PROFITABILITY

### Designed to last

- Mudguard and cab interior made of sturdy metal, easy to clean
- Well known and reliable part suppliers (Dana Axles, Perkins and Kirloskar engines, etc.)
- Oil-bathed multi-disc brakes in the axles
- Cab meets level 2 ROPS/FOPS standard



### Simple and efficient maintenance

The machine has been designed to enable easy access to the various maintenance elements

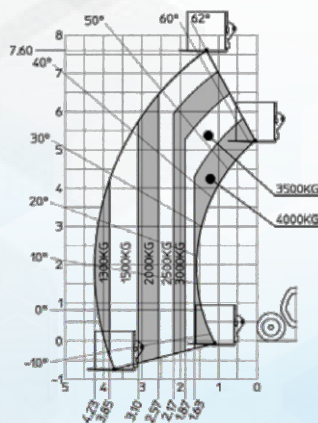
- Wide opening engine cover
- Brake fluid fill level displayed on the dashboard
- Accessible lubrication points
- Fuel tank and battery isolator switch remain accessible with the engine cover closed

## Telehandler



Standard & options  
S - Standard / O - Options /  
- not available

Transmission		Torque Converter	
Engin Powep	ch	96	94
Engin brand		Kirloskar	Perkins
Max. capacity	m	4000	4000
Max. lifting height	m	7,60	7,60
Max. reach	kg	4,23	4,23
Steering wheels / Driving wheels		4/4	4/4
Overall length of fork carriage	m	4,93	4,93
Frame outer turning radius	m	3,90	3,90
Ground clearance	m	0,38	0,38
Unladen weight (with forks)	kg	8115	8140
Hydraulic flow rate	l/min	86	86



o\* standard with hydraulic line on the boom head

	KIRLOSKAR	PERKINS
<b>Engine</b>		
Kirloskar engine - 96 hp	S	-
Perkins engine - 94 hp	-	S
<b>Cabin</b>		
Closed cab - FOPS/ROPS - No air	S	S
Closed cab - FOPS/ROPS - Heating	-	O
Closed cab - FOPS/ROPS - AC	O	O
Closed cab - FOPS/ROPS - Heating/AC	-	O
Cabin fan	O	O
Front and rear windscreen wipers	S	S
Internal rear-view mirror	O	O
Protective windscreen grille	O	O
Wheel alignment indicator (front and rear)	S	S
Left-hand and right-hand wing mirrors	S	S
Fixed steering column	S	S
Vinyl seat - mechanical suspension	S	S
Fabric seat - mechanical suspension	O	O
Car radio	O	O
<b>Lights</b>		
Rotating beacon light	O	O
Driving lights (front, rear, cornering, reverse, braking)	S	O
Number plate light	O	S
Front working lights	O	O
Rear working lights	O	O
<b>Safety</b>		
Simple hydraulic movement cut-off	S	S
Aggravating movements hydraulic stability cut-off	O	O
Battery cut-off	S	S
Seat sensor	S	S
Safety wedge for the lifting cylinder	S	S
<b>Boom and interfaces</b>		
Hydraulic line on the boom head with rapid coupling	O	O
Rear hook	O	O
Rear hook with mirror	O	O
<b>General options</b>		
Hydraulic oil cooler	O*	S
Tool kit	S	S
Cyclonic pre-filter	S	S
<b>Specifications for cold weather countries</b>		
Cold fuel	-	O
High capacity battery	-	O
Engine block heater	-	O
<b>Tyres</b>		
BKT 16/70-20 EM936 tubeless	S	S

## Do you know the real cost of ownership of your equipment?

**REDUCE TCO**  
(Total Cost of Ownership)  
gives you detailed information  
about the breakdown  
of cost items for your  
machine and helps you  
to optimize the profitability of  
your production tool.

Calculate your TCO on  
[tco.manitou.com](http://tco.manitou.com)



## What does TCO stand for?

The TCO is the total cost of ownership of an asset, more commonly known as the running cost.  
This indicator considers both fixed costs, such as acquisition, interest, rent, and residual value, but also all variable costs linked to using your machine, such as maintenance, user training, etc.  
Manitou takes reduction of TCO of its machines into account right from the design stage, to ensure that your running costs are optimised.

